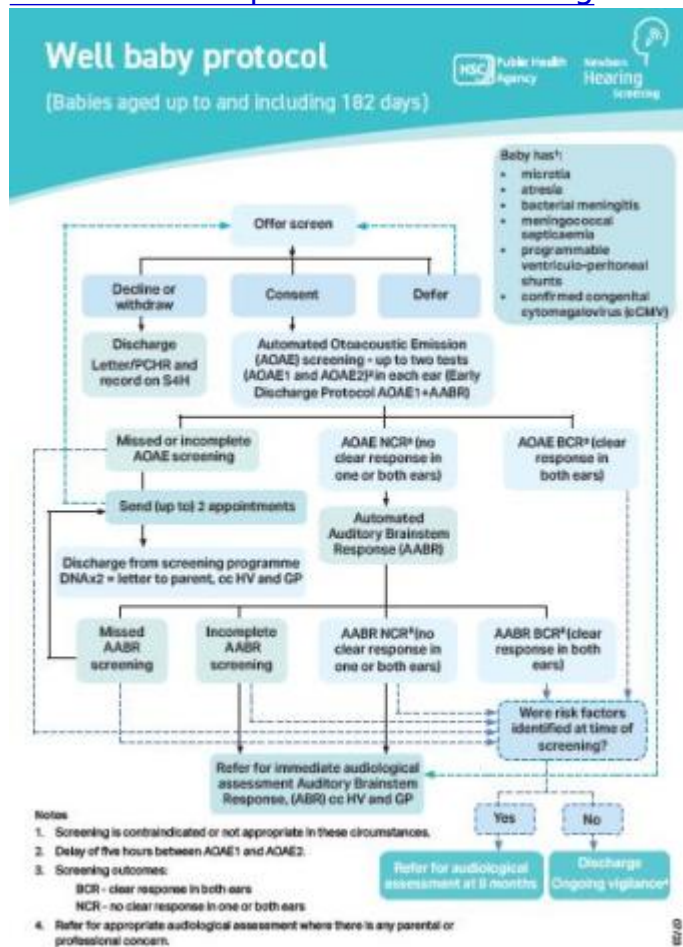


Thursday, 26 October 2023

Service Development and Screening



This flowchart for healthcare professionals shows the protocol for discharging a well baby from the Newborn Hearing Screening Programme in Northern Ireland. There is also a flowchart for babies in the NNU (neonatal unit) or special baby care unit.

Details

Format

A4 1 page

Target group

Health Professionals, interested parents

Downloads

Attachment

Size

Tags

- [newborn hearing screening](#)
- [newborn babies](#)
- [screening](#)
- [flow chart](#)
- [protocol](#)

[Print](#)