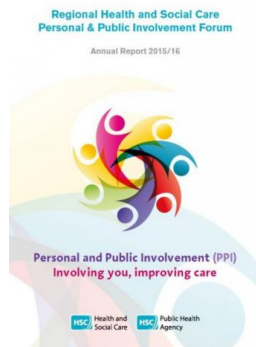


Friday, 21 July 2017

## [Allied Health Professions](#)



The Regional HSC PPI Annual Report for 2015/16 provides an overview of the work of the Forum.

Personal and Public Involvement (PPI) is about the active and meaningful involvement of service users, carers and the public in Health and Social Care (HSC) and an essential component in the delivery of truly person-centred services. It is also a statutory duty. The PHA as part of its leadership responsibilities for PPI has established and chairs the Regional HSC PPI Forum which brings together all HSC organisations, working alongside service users and carers, to bring a focus on involvement.

## Details

Format

A4 Pdf, 25 pages

Target group

Healthcare professionals and service users/carers

## Downloads

Attachment	Size
------------	------

<a href="#">Regional HSC PPI forum annual report 15 16 0.pdf</a>	983.5 KB
--	----------

[Print](#)