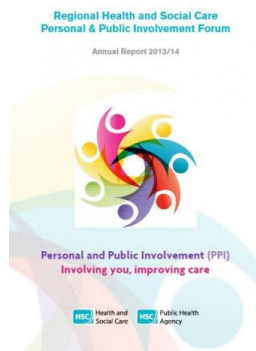


Thursday, 26 March 2015

## [Allied Health Professions](#)



The Regional HSC PPI Annual Report for 2013/14 provides an up-date of the work of the Forum and outlines the key areas that have been progressed including the development of PPI standards and the advancement of a generic PPI awareness raising and training programme.

Personal and Public Involvement (PPI) is about the active and meaningful involvement of service users, carers and the public in Health and Social Care (HSC) and an essential component in the delivery of truly person-centred services. It is also a statutory duty. The PHA as part of its leadership responsibilities for PPI has established and chairs the Regional HSC PPI Forum which brings together all HSC organisations, working alongside service users and carers, to bring a focus on involvement.

## Details

Format

A4 Booklet, 29 pages

Target group

Healthcare professionals and service users/carers

## Downloads

Attachment	Size
------------	------

<a href="#">Final Regional HSC PPI forum annual report 13-14.pdf</a>	294.88 KB
--	-----------

[Print](#)