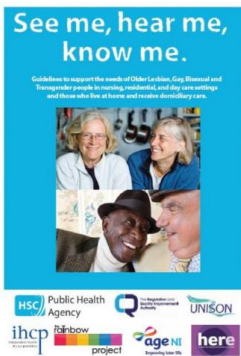


Thursday, 27 March 2014

## Health and Social Wellbeing Improvement



Guidelines to support the needs of Older Lesbian, Gay, Bisexual and Transgender people in nursing, residential, and day care settings and those who live at home and receive domiciliary care.

To see the press release linked to this publication [click here](#).

## Details

Format

A4 pdf

Target group

Health professionals

## Downloads

Attachment	Size
------------	------

<a href="#">Guidelines V3_0.pdf</a>	3.35 MB
-------------------------------------	---------

[Print](#)