

The Public Health Agency (PHA) employs approximately 400 staff members who work across [\*\*five key locations\*\*](#) in Northern Ireland. These dedicated professionals focus on improving public health, delivering essential services, and supporting various health initiatives.

The diagram below illustrates the PHA's organisational structure, outlining key departments and areas of responsibility.

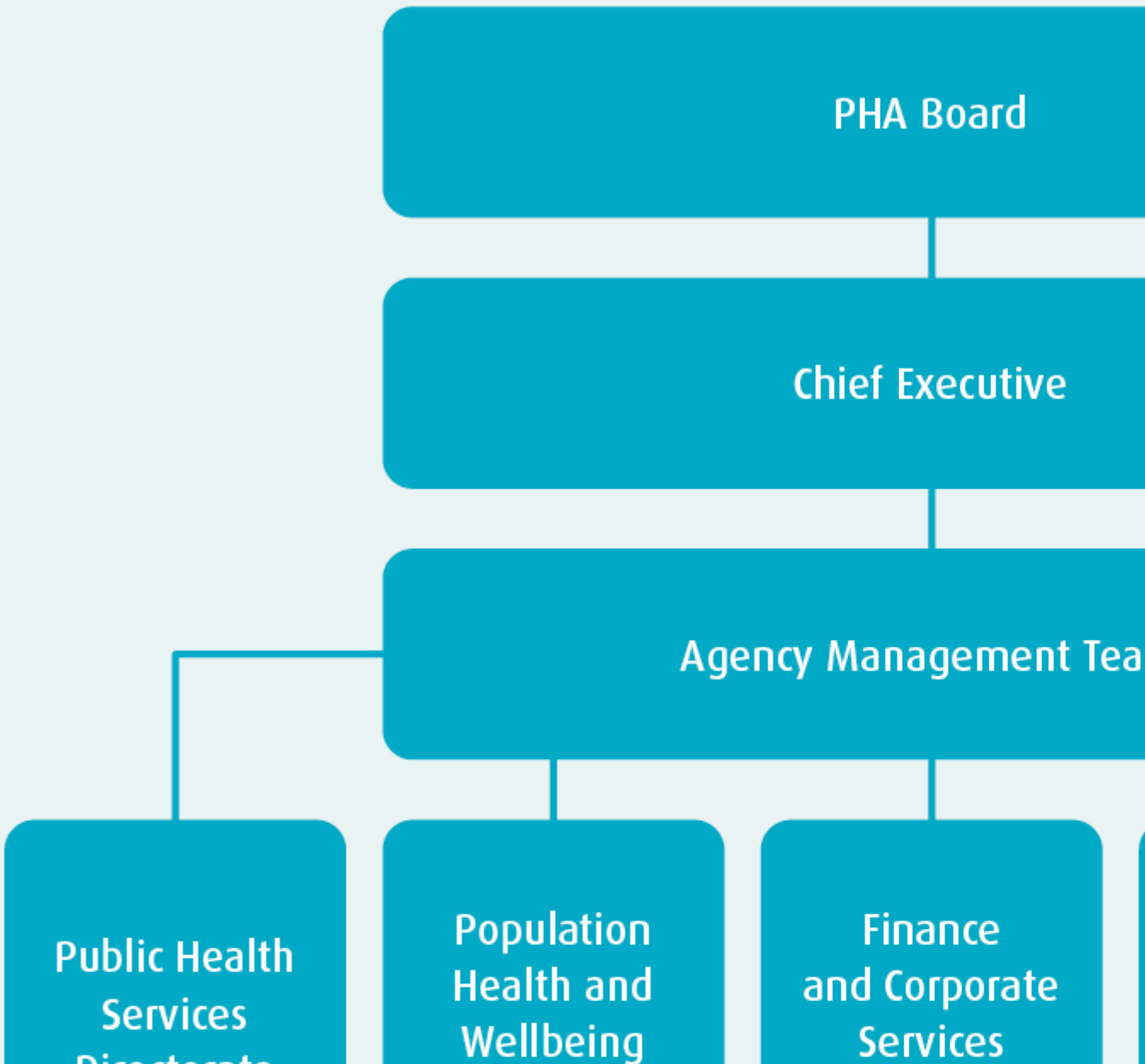






# Public Health Agency

## Organizational Structure



# Downloads

Attachment	Size
<a href="#">PHA organisational chart 01_2025.png</a>	55.1 KB
<a href="#">PHA organisational structure accessible Word version.docx</a>	13.72 KB

[Print](#)